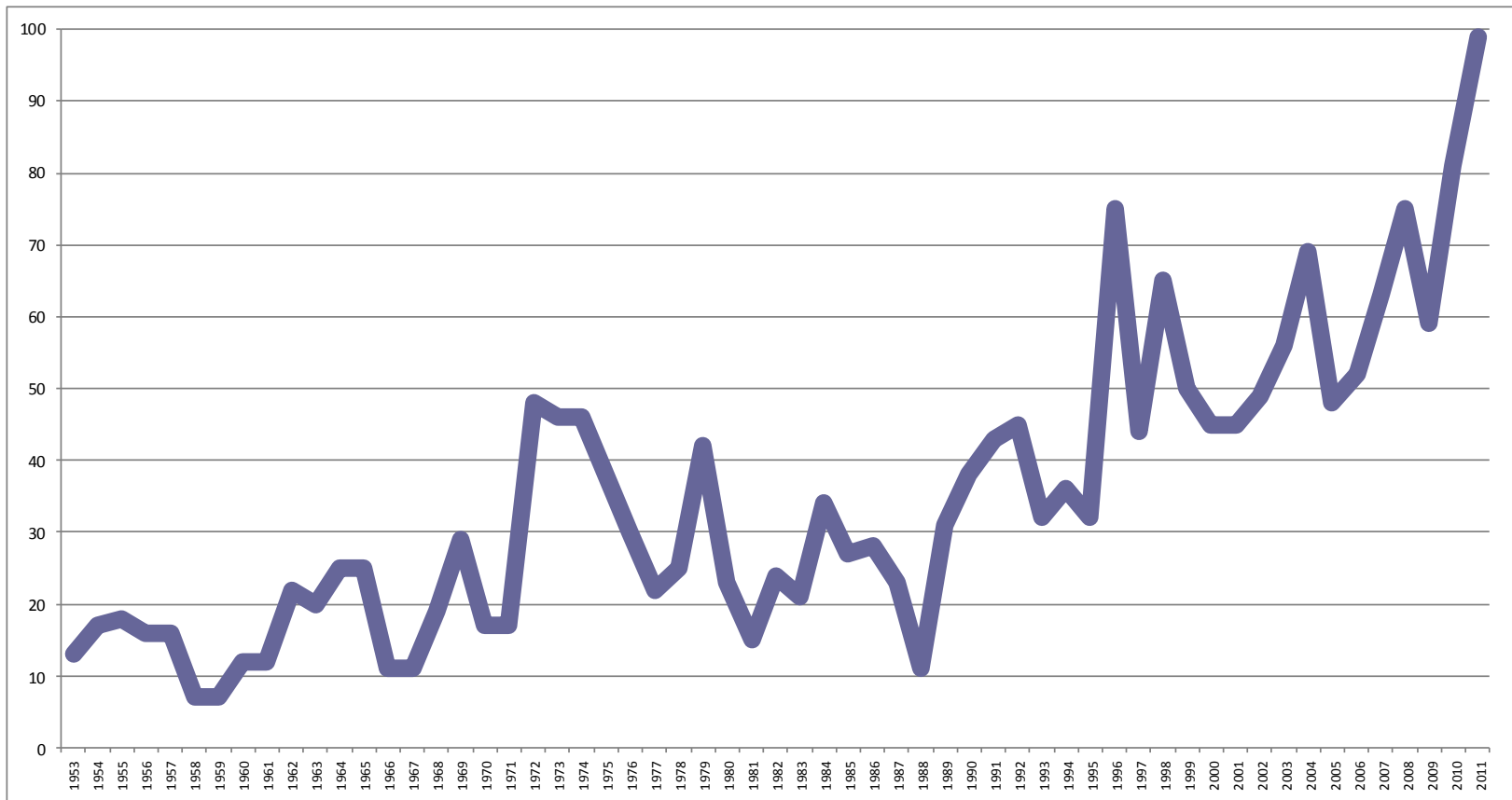


SLIDE 1: NUMBER OF U.S. PRESIDENTIAL DISASTER DECLARATIONS – 1953-2011



Source: Michel-Kerjan and Kunreuther, *Science*, 2011 (data from FEMA)

SLIDE 2: COST OF MAJOR DISASTER DECLARATIONS BY SIZE FY 1989-FY 2014

1/4

of declared disasters account for **93%**
of federal disaster cost **since 1989**



% of declared disasters



% of disaster costs



75%
of all
disasters cost
less than
\$41.8M

account for

7%
of federal
disaster
spending

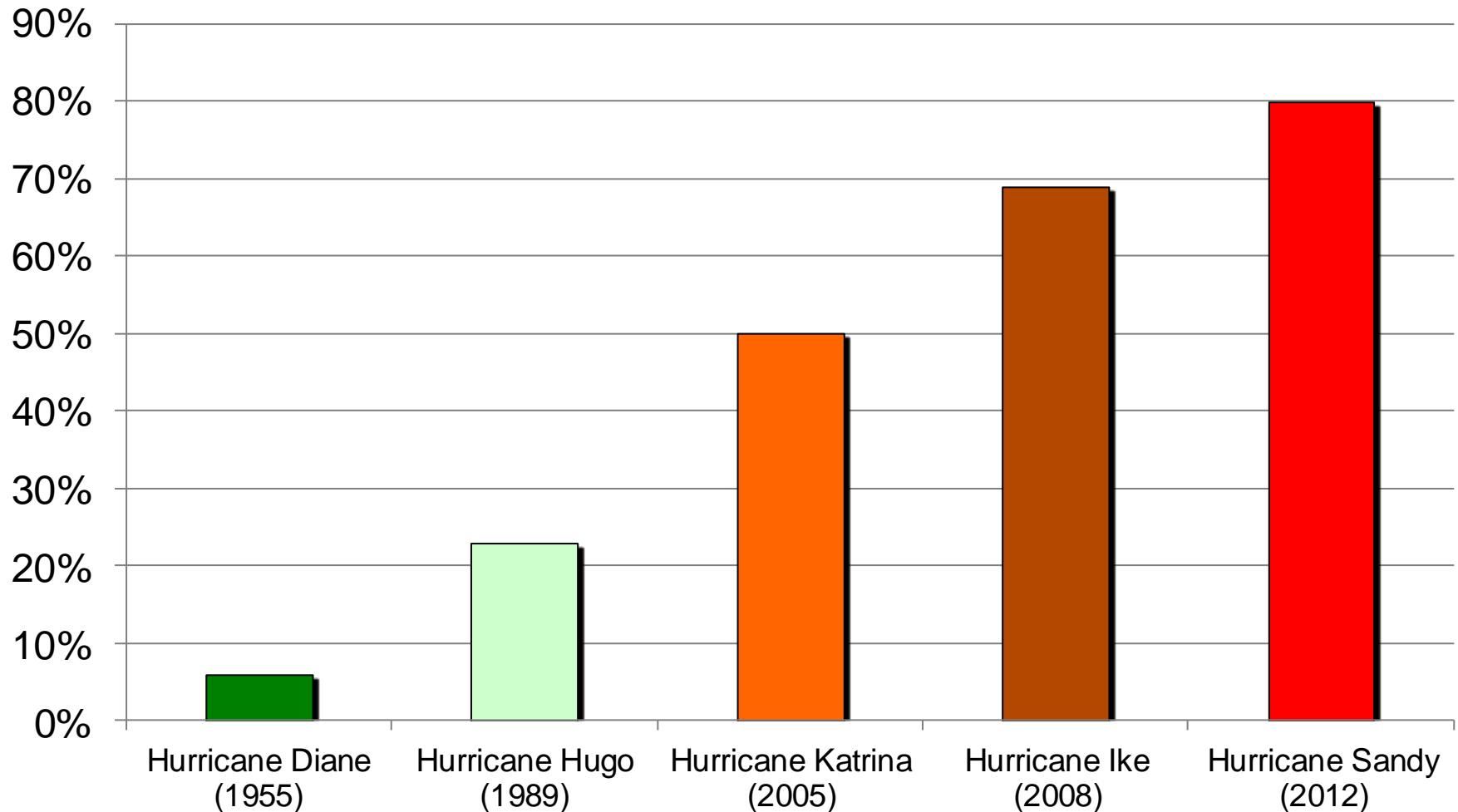


25%
of all
disasters cost
more than
\$41.8M

account for

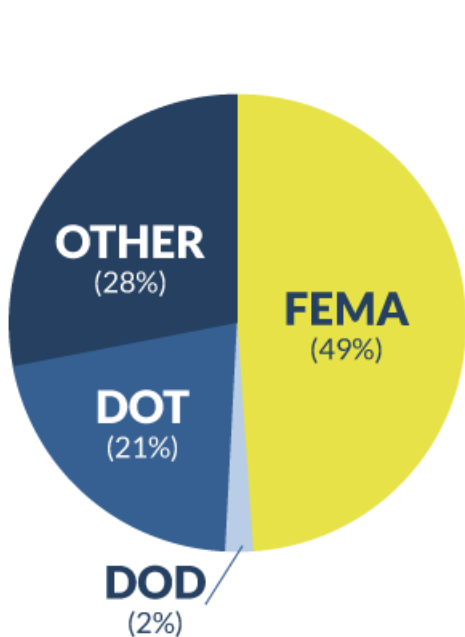
93%
of federal
disaster
spending

SLIDE 3: Role of Federal Government in Disaster Loss Payment (proportion of total economic loss)

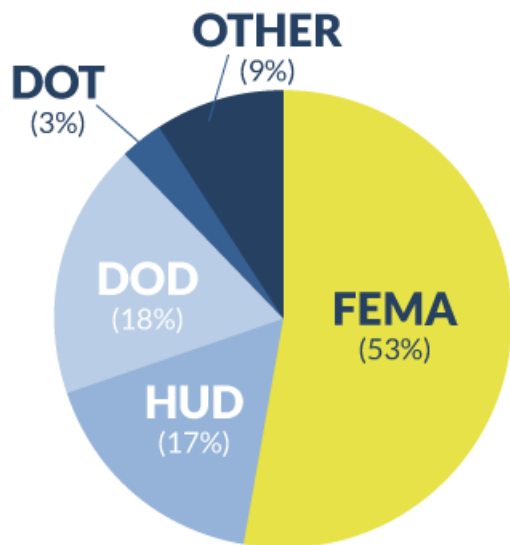


SLIDE 4: Growth of Non-FEMA Federal Disaster Aid

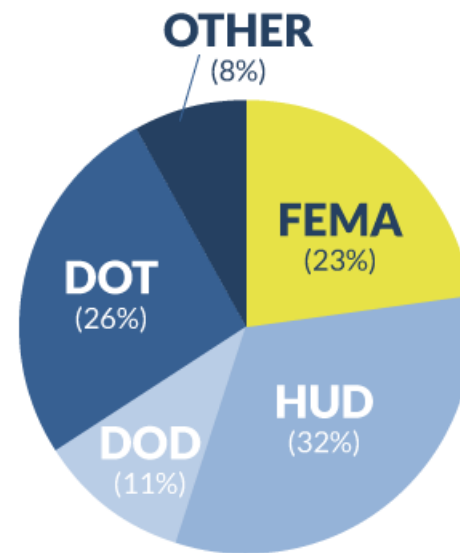
Hurricane Hugo and
Loma Prieta Earthquake



Hurricanes Katrina,
Rita, Wilma, and Ike

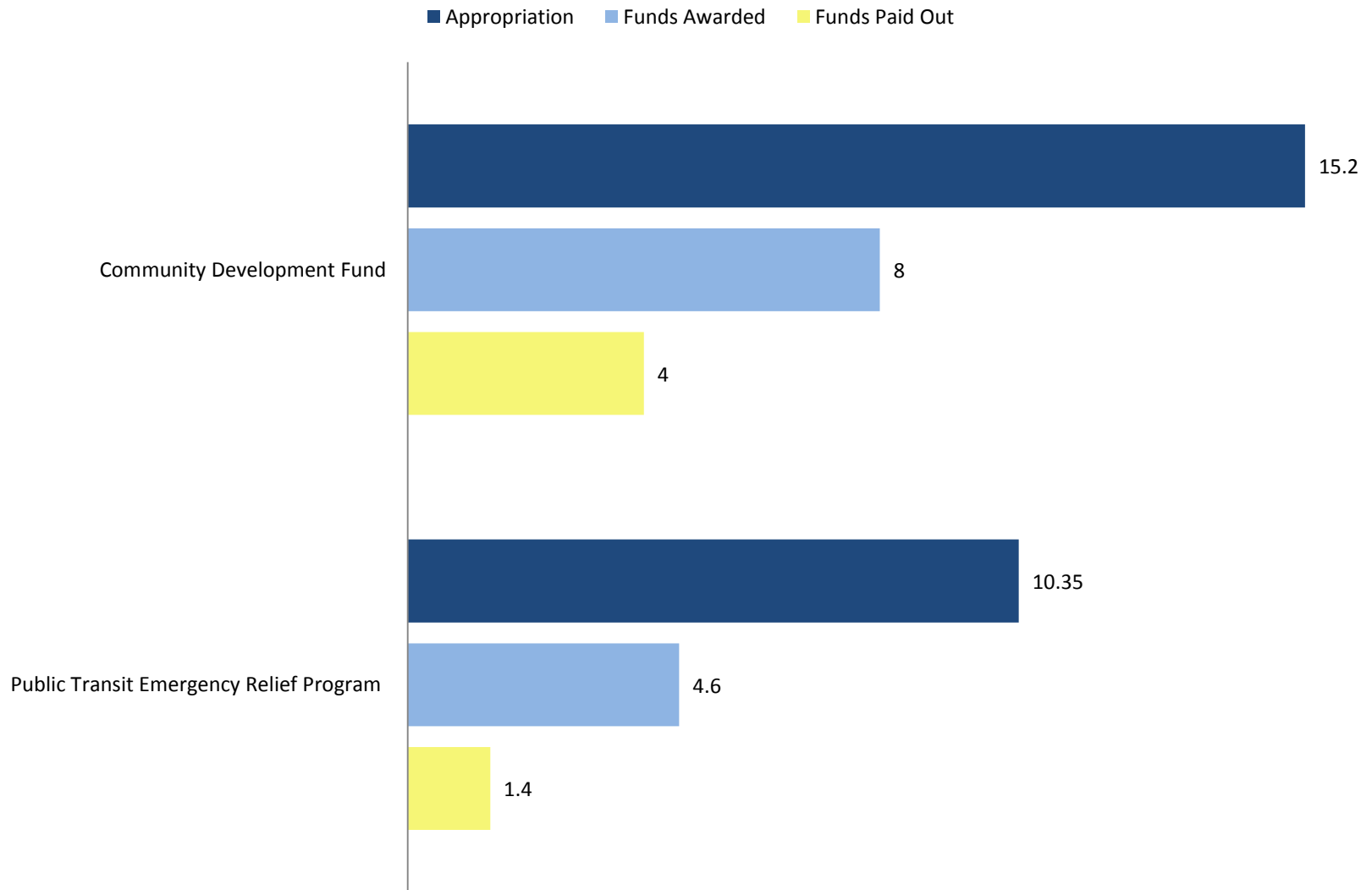


Hurricane Sandy



Source: CRS analysis of supplemental appropriations laws passed following major disasters. For the three categories above, Hurricane Hugo and the Loma Prieta Earthquake included P.L. 101-100, P.L. 101-130, and P.L. 101-302. Hurricanes Katrina, Wilma, Rita, and Ike included P.L. 109-61, P.L. 109-62, P.L. 109-148, P.L. 109-234, P.L. 110-28, P.L. 110-116, P.L. 110-252, and P.L. 110-329. Hurricane Sandy included P.L. 113-2.

SLIDE 5: Hurricane Sandy Federal Disaster Assistance



Source: Sandy PMO: Disaster Relief Appropriations Act of 2013 (Sandy Supplemental Bill) Financial Data available at <http://www.fema.gov/media-library/assets/documents/111181> viewed May 4, 2016.